



ANNUAL REPORT 2017-2018

**TE KĀHUI MATEPUKUPUKU O AOTEAROA
CANCER SOCIETY OF NEW ZEALAND WELLINGTON DIVISION INC.**

COVERING: MARLBOROUGH, NELSON, WAIRARAPA AND GREATER WELLINGTON



CANCER AFFECTS US ALL

- One in three New Zealanders are affected by a cancer diagnosis.
- Annually approximately 23,000 people are diagnosed and 9,500 will die because of cancer.
- New Zealanders have high rates of lung cancer, colorectal (bowel), prostate, breast and skin cancer.

WHAT WE DO

- Provide support and information.
- Fund vital cancer research including studies into the development of new ways to treat cancer with fewer side effects.
- Reduce the risk of developing cancer through SunSmart, Smokefree and nutrition programmes for local schools, workplaces and our local community.
- Targeted awareness initiatives focusing on reducing cancer and addressing inequity. Currently these touch on Māori, Pacifica and men.
- Working in partnership with other community groups for activities including SunSmart, Smokefree and physical activity and nutrition.
- The Cancer Society is here to help anyone who is dealing with cancer, no matter what cancer.
- Provide patient advocacy.



CONTENTS

- 3 OUR PURPOSE & STRATEGIC AIMS
- 4 FROM THE CEO – MICHAEL SMITH
- 5 FROM THE CHAIR – KATE MORRISON
- 6 ACROSS OUR DIVISION
- 8 INDIGENOUS PEOPLE AND CANCER
- 9 OUR PEOPLE & FINANCIAL SUMMARY
- 10 SPONSORS AND SUPPORTERS
- 11 OUTCOMES

OUR PURPOSE

- Improving community well-being by reducing the incidence and impact of cancer.
- Cancer Society NZ Wellington Division is an independent charity and 100% community funded. Our unique combination of local programme delivery, community engagement and national influence enables everyone who cares about cancer to make the biggest possible difference.
- Together with our volunteers, supporters, stakeholders and staff, we are committed to reducing the impact of cancer on individuals and the community. We work across every area of every cancer.
- World-class research for preventing and treatment of cancer.
- Supporting people as they navigate the cancer journey.
- Realignment and advocating to ensure that governments take action on cancer.
- We are there not only for those touched by cancer today, but to prevent and manage the effects of cancer into the future.

STRATEGIC AIMS

- Health promotion – A growing number of New Zealanders are demonstrating cancer risk-reducing behaviours and inequalities are being addressed.
- Supportive Care – For anyone affected by a cancer diagnosis we offer free, evidenced based cancer information and confidential support.
- Information/Resources – The production of high quality, culturally appropriate, and evidence-based information and resources in the Cancer Society's focus areas.
- Research – Donations are used to fund research that build on the evidence, and enhance the reputation of CSNZ in the public, academic and clinical communities.
- Advocacy & Relationships – Effective advocacy and relationships that enhance the leadership role, improve cancer control and contribute to funding for CSNZ activities.
- Volunteering – Our organisation is engaged with our communities, including volunteer involvement that supports us to achieve our mission and vision.
- Funding – Increased income to grow the capability of the Cancer Society in a sustainable way.

OUR PEOPLE

SENIOR MANAGEMENT TEAM

MICHAEL SMITH
Chief Executive Officer

MARGARET ALVE
Supportive Care Manager

GRAEME MILNE
Fundraising and Communications Manager

RAEWYN SUTTON
Manager Health Promotion

MOANA UERATA-JENNINGS
Manager Volunteering
(March 2018 – Present)

TRACEY HARRIS
Manager Volunteering (to January 2018)

JACINTA BUCHANAN
Centre Manager Wairarapa

MARGOT WILSON
Centre Manager Marlborough

MICHELLE HUNT
Centre Manager Nelson

DIVISIONAL BOARD

KATE MORRISON
Chairperson Wellington

DR ANDREW SIMPSON
Vice Chairperson Wellington

TIRA ALBERT Wellington

JOANNE DOHERTY Wellington

DR DAVID HAMILTON Wellington

MOERA TUILAEPATA-TAYLOR
Wellington

CHRISTINE PIHEMA Wellington

AMY BLACK Wellington

JONATHAN GOLDSTONE
Wellington

DR STEPHEN VALLANCE
Chairperson Marlborough Centre

ALISON MCALPINE
Chairperson Nelson Centre

DR ROB IRWIN
Chairperson Wairarapa Centre



FROM THE CEO

CANCER SOCIETY WELLINGTON DIVISION



HE AHA TE MEA NUI O TE AO?

HE TĀNGATA, HE TĀNGATA, HE TĀNGATA

WHAT IS THE MOST IMPORTANT THING IN THE WORLD?

IT IS PEOPLE, IT IS PEOPLE, IT IS PEOPLE.



MICHAEL SMITH

On behalf of the Cancer Society Wellington Division, I would like to start with an appropriate whakatauki, a Māori proverb: He aha te mea nui o te ao? He tāngata, he tāngata, he tāngata. What is the most important thing in the world? It is people, it is people, it is people. That is truly the heart of what we do.

Annual reporting is about acknowledgement and reflections. It is always a highlight to reflect on the broad range of stakeholders involved in the work we do. In September 2017 we launched the Hope4Life regular giving campaign and that resulted in close to 1,700 donors committing by 31 March to an average regular gift of \$30 per month. That's a great response. We are grateful to them and of course to all of our supporters who provide us with the funds to operate, both as donors and sponsors. I acknowledge staff who are committed and hardworking, and we are always humbled by the courage and fortitude of clients who use our services. I want to further acknowledge the many health organisations we work with across the division.

Cancer is the leading cause of death in New Zealand, with 9,500 deaths annually. The infometrics on page nine provide sombre reading. As our chairperson Kate Morrison says, we have much work to do.

Financially the Division has had a strong year. We raised just under \$5.7 million from our supporters. Thank you to all the individuals, businesses (including ANZ our principal sponsor), estates and trusts that have generously supported us over the last twelve months. Without your help we cannot continue. The demand for our services continually increases and so we are working hard to raise even more funds in the coming financial year.

Once again a special thank you to the hundreds of volunteers who freely give of their time and skills across all areas of our work. You are taonga and we value you greatly.

Our annual report provides a brief overview of our activities during the past twelve months. Please visit our website or contact us if you would like further information.

Ngā mihi nui.

Michael Smith
Chief Executive Officer



FROM THE CHAIR

CANCER SOCIETY WELLINGTON DIVISION



“THE CANCER SOCIETY HAS AN IMPORTANT ROLE IN CREATING A WORLD CLASS CANCER SYSTEM IN NEW ZEALAND.”



In reviewing the financial year, it is perhaps opportune to reflect on where we have come from more broadly.

Fifty years ago treatments for cancer were by modern standards almost barbaric. Surgery was radical, radiation was crude, and chemotherapy often brutal. Cancer care was hospital-based, doctor-centric, and one dimensional. The idea of cancer survivorship or cancer as a chronic condition appeared to be a myth.

We have come a long way since then, with lower mortality – more cases, but more survivors. Prevention, screening, early diagnosis, specialist treatment and survivorship or palliative care are all well established nowadays. Evidence-based interventions in areas such as smoking have resulted in several tangibles being put in place including price increases, plain packaging, advertising restrictions, and smoking restrictions in public places and workplaces. The Cancer Society continues to take the lead on addressing issues like these across all cancers. Globally, it is estimated that there will be one billion smoking related cancer deaths in the 21st century. As people live longer, the challenges of cancer increase because of the greater numbers affected and the complexities of treating the many types of cancer. In 2018, one-quarter of patients are over 80.

To quote the Cancer Society's Medical Director Dr Chris Jackson: “Cancer is changing, patients are changing, treatments are changing... staying the same is going backwards.” The Cancer Society has an important role in creating a world class cancer system in New Zealand. Our Purpose and Strategic Aims (as shown in the inside front panels of this report) reflect that. Our work is relevant and important. We are constantly encountering a greater need for our services and being confronted with our capacity limitations.



KATE MORRISON

On behalf of my fellow Board members, I would like to acknowledge the great efforts of not only our staff and volunteers, but all of our stakeholders over the past twelve months. I want to repeat my comments from last year's annual report; we do not lack in purpose and it's great to be part of a collective effort that means so much to all those involved in experiencing, supporting or reducing the risks associated with any cancer journey. The Board and staff firmly believe that no one should face cancer alone.

Thank you for your ongoing support.

Kate Morrison
Chairperson

ACROSS OUR DIVISION

WAIRARAPA

Support & Education provides survivorship programmes. Our support groups meet monthly from February to November, with two support groups, Blood Cancer and Lymphoedema support, meeting four times a year. Residents of South Wairarapa benefit from an outreach service at a venue sponsored by the Giddens family.

Kia ora E-te Iwi demystifying cancer workshops continue in our area. We host programmes such as Look Good Feel Better at least six times a year.

Events and Fundraising is always in a partnership with individuals, groups and organisations. This year several people shaved their heads and raised money from sponsorship, but of note was the marathon bike ride by Pete Hiemstra in South America, sponsored by his friends and family. A fantastic effort by Pete, raising \$10,000. There are so many who support us in this way and we are very grateful to all.

Health Promotion – Jacqui Ewington our Health Promoter campaigned for SunSmart accreditation in primary schools throughout the region, and participation in the Junk Free June initiative. She successfully launched The Fresh Air Project in partnership with Compass Health, joined by six cafés and restaurants who are the first to participate in this national drive for a smoke free Aotearoa by 2025. SunSmart behaviour is catching on and the Cancer Society trailer with umbrellas and gazebos was booked solid from October 2017 to March 2018.

June 2017 An auction was held in partnership with Wairarapa DHB to raise money for the new chemotherapy unit at the Hospital. The free annual public lecture on the new Bowel Cancer Screening programme was supported by approximately 60 locals.

July 2017 The AGM saw the retiring Chairperson Susan McWilliam (after nine years in the role) succeeded by Rob Irwin. The Pop Up Winter Christmas Shop in Greytown, a new initiative supported by Catherine McKinley and

friends, raised \$5,000.

Aug 2017 Daffodil Day as usual turned out to be a fine day with the five towns painted yellow as people were donating money and wearing their daffodils. Sales of fresh flowers exceeded expectations. Thanks to our growers, in particular Jackie and Alistair Sutherland. New locally made products proved popular as well, such as Kirsty Gardner's ceramic daffodil candleholders. Nearly \$52,000 was donated.

Sept 2017 Five Hope garden Volunteers, including Ewart Braddon, cared for our lawns and gardens. A group of students from Te Wānanga o Aotearoa, led by Linda their tutor, helped build our paths and many others have donated expertise and time, including the Vuleta family who generously built the gazebo.

Oct 2017 We celebrated our first birthday since moving into Margaret Chittick House with morning tea. Our Chairperson Keith Hunt and Ambassador Bob Francis both spoke about our successes locally in the Cancer environment, and about what is happening at the Centre. The cake was made and donated by McAnulty's Express Café in Masterton.

Nov 2017 Property Brokers Real Estate Wairarapa held their annual Craig Cooper Memorial golf tournament, with \$20,000 going to boost our pending Relay For Life event in March 2019.

Dec 2017 Our first ever Twilight Monster Garage Sale and Christmas Raffle was held at Margaret Chittick House. The 1.5 metre tall stocking packed with goodies from Pain & Kershaw Mitre 10 Martinborough was popular and was won by a Masterton family. Esther Bunning donated the proceeds of her sittings for the launch of her photo book *Children of Aotearoa* which raised \$5,000 for us. We celebrated World Volunteer Day with approximately 40 Volunteers.

Jan/ Feb 2018 Over the summer we participated in some awareness raising at events including Waitangi Day and the local A&P Shows. SunSmart at local primary schools was supported by

JNL who donated shade trees for those schools achieving accreditation. Wairarapa DHB commenced a chemotherapy service for low dose, low risk patients. We supported this with the establishment and set-up of equipment for the unit. Volunteers help at each treatment day.

March 2018 We congratulated Mrs Pauline McKenzie and the Women's Auxiliary represented by Wes Ensor when they all received their Civic Awards for their contributions as Volunteers to the Cancer Community.

MARLBOROUGH

Supportive Care – Our main service focus was well utilised over the 2017–18 year across diagnosis and treatment support, and survivorship support for patients and whānau. Several networking sessions with hospital, primary care and Māori health providers were held throughout the year. Oncology and driving services were well supported by dedicated Volunteers.

April/ May The Graperide Cycling event raised \$5,000 for the Cancer Society. We gave a presentation at the Marlborough Health and Safety Forum at the District Council on skin cancer risk reduction for outdoor workers, along with information on general well-being and cancer risk reduction. Cancer Society hosted a meeting with members of the Smoke-free Coalition and one of the leaders of Hapai te Hauora, the national Smokefree organisation, discussing current plans for Smokefree 2025, with a review of local priorities towards this goal.

June/July The Book Fair was once again a successful event, raising over \$15,000 – a wonderful Volunteer led event. There were some great one-off individual fundraising events; a cancer survivor celebrated her eleven-year survival anniversary with a fundraising dinner. A dedicated gardener gave us her generous annual donation from gate takings for viewing her Monet themed garden. Another local woman raised \$4,700 while competing in a rickshaw race across India. Mango Restaurant held their annual birthday dinner, and for

the third year running, nominated the Cancer Society as their charity of choice.

Aug/Sept Daffodil Day brightened up the district and was a most successful day due to amazing staff, Volunteer and community effort. The money donated by Fisher & Paykel after damage to last year's ceramic daffodil installation, allowed us to create a ceramic daffodil glade at Wairau Hospital outside the Oncology department.

Oct/Nov A focused Māori Men's Health evening was held at the Rangitāne Cultural Centre with guest speaker Buck Shelford in conjunction with Māori Health Services and the Nelson Marlborough DHB. Cancer Society Marlborough presented at a Cancer Korero for whānau held on 12 October and supported two Māori whānau who gave positive and powerful presentations on their experiences of a cancer journey. Staff member Janet Steggle retired in October and Lorraine Walker joined us in the administration role in November.

Jan / Feb A Kia Ora E-te Iwi facilitator training course funded by Nelson and Marlborough Cancer Society was held in February in Nelson. Health Promoter Anna Small left to take up a position as a dietitian in Southland and we welcomed Reuben Molnar to the position in January.

We ran our annual Skin Awareness Clinics in Picton and Blenheim with 256 people attending, supported by visiting and local doctors. With a long hot summer our Shade Loan Scheme was utilised to capacity.

NELSON/TASMAN

June 2017 We held our Annual Charity Ball on Saturday 24 June at the Trafalgar Centre. The night was a huge success with just over \$47,000 raised to support our patients, their families and carers in the Nelson/Tasman region. Our naming sponsor was Trade Central NZ and we received so much support from numerous generous sponsors, businesses, supporters and Volunteers. Guests were treated to amazing food cooked by some of our top Nelson chefs and restaurants: Ford's Restaurant & Bar, Hopgoods, Paula Saengthian-Ngam (Paula's Plate)

and Gourmet Catering.

July 2017 The Jump For Cancer Nelson campaign with Skydive Abel Tasman was launched in July. A total of 36 people took up the challenge, raising a total of \$33,947. One of our amazing Volunteers, Betty Van Rooyen, took up the challenge and raised \$2,149. TVNZ were even there filming on the day and Betty has become a local celebrity.

Sept 2017 Cyndy Smith joined the team as our new Support Co-ordinator to support all of our existing services as well as looking at new services, such as in our rural areas like Golden Bay.

Oct 2017 We ran a School Holiday Programme in October, and have continued to run it every holiday since then.

Dec 2017 The Fresh Air Project was launched: Nelson/Tasman's first Fresh Air smoke free outdoor dining initiative with 22 local cafés and restaurants coming on board. The Cancer Society Nelson, Nelson Marlborough District Health Board, along with financial support from the local councils helped to fund this project, with the goal of making our community and New Zealand smoke free by 2025.

March 2018 Relay For Life at Trafalgar Park was a huge success thanks to the support of major sponsor G J Gardner Homes and the support from our many other sponsors and all those who participated in a team. A big thank you to our wonderful Volunteers who gave their time and participated with generosity on the day. We raised just over \$105,000, which will help those in our community affected by cancer.


GREATER WELLINGTON

CENTRAL WELLINGTON, KĀPITI, PORIRUA AND HUTT VALLEY Supportive Care: He taonga rongonui te aroha ki te tāngata. Goodwill toward others is a precious treasure.

Supportive Care is available to support patients and family/whānau in our community.

We have been maintaining through 2017–18 our Supportive Care range of services and information resources

that people can access online, over the phone, in hospital and in their communities, with the ethos that we believe anyone affected by a cancer diagnosis benefits from free, evidence-based cancer information and confidential support.

 We network and are in partnership with a wide range of hospitals, both private and public, across the Division. We work with cancer care nurses, radiation therapists, social workers, hospices, attend cancer inter-agency meetings, and meetings about elderly health care, and care for Pacifica people and whānau. We partnered with Otago University and supported the Symposium on Indigenous People and Cancer held in February this year, which was a fantastic event.

 We continue to work with demographic groups that have poorer health outcomes and late diagnosis, to develop better outcomes. We have made this our focus this year. We are working with our Mātātuhi Arahi Service Plan for Māori, with the Te Roopu Tautoko group, part of the Division's Board, to implement and grow our Māori knowledge, equity principles, and increasing our use of Te Reo. We are partnering with Māori providers of Kia Ora E-te Iwi. Training occurred in February, with interested parties training facilitators to run Kia Ora E-te Iwi in the South Island. We support Te Mauri by spreading the word, and attended the opening and blessing of this new service.

	2017	2018	%
Here are the statistics:			
Referrals/contacts			
Kāpiti	191	308	61%
Marlborough	667	662	similar
Nelson	569	798	40%
Wairarapa	815	891	9%
Wellington	2,872	3,374	17.5%
Total	5,114	6,033	8%
Māori contacts increased by			43%

We attend and support many conferences and day events whenever we are asked to partner with people. This year these included Te Rā o te Raukura, a whānau orientated community festival in the Hutt, a GP conference, and the Relay For Life story booth. We have been speaking at education days, to groups in the community like Rotary, meeting with health care teams, and providing information resources to give away. Please note that for Wairarapa/ Wellington/ Marlborough: their figures do not include people attending groups through the year.

Health Promotion: We have focused on increasing our presence in Porirua:

Oct 2017 The Safer Porirua Pop Up Shop was a Council initiative to bring health and safety and social service providers together with the Porirua community.

Feb 2018 Waitangi Day Porirua – The event welcomed over 25,000 attendees and was the largest Waitangi Day event outside of Waitangi itself. Cancer Society Wellington was the only health organisation to attend.

Engagement with the community largely centred around SunSmart messaging, with the provision of sunscreen, cancer journey stories, and making healthy snacks available to attendees.

We were also very fortunate to have been invited to attend the pōwhiri held at Takapūwāhia marae.

Support for Workplaces and Community organisations: We are frequently asked to support workplace wellness events and key community events. Workplaces supported included Rimutaka Prison, Hutt City Council, Reserve Bank, Precinct and Naylor Love work sites. Key Community events supported and attended included Te Rā o Te Raukura, Ruck Cancer Rugby Tournament and NIWA Wellington Regional Science and Technology Fair.

National Tobacco Control Project – A five-year project 2017–2022.

Nationally CSNZ are working on the project Toward Smokefree Aotearoa 2025: Reducing the retail availability of tobacco.

It is expected that the activities outlined in this plan will contribute to or result in:

- Increased awareness and attitude change.
- The introduction of legislation to reduce the retail availability of tobacco.
- Reduced retail availability of tobacco.
- Reduced youth smoking initiation.
- Increased cessation and quit attempts including for Māori and Pacifica peoples.
- Long-term reduction in smoking rates and a significant contribution to the achievement of Smokefree 2025.

FUNDRAISING

From a fundraising perspective we had a record result for the 2018 Relay for Life, with great participation of schools, particularly Hutt International Boys (since 2003 they have raised \$850,000 for this event). We are thankful to those who have made bequests to us. We had a successful launch of our Hope4Life programme in September 2017 which established 1700 monthly givers by the March 31st. As always the huge support that volunteers have given to us not only for Daffodil Day but also across our services (see some further detail in the info metrics in some of the following pages) continues and is acknowledged.

INDIGENOUS PEOPLE & CANCER

Addressing inequities with systematic solutions. At the Cancer Society we are committed to reducing the impact and incidence of cancer for all New Zealanders. However, there are some population groups that have higher incidence, mortality and disproportionate impact across many cancers. Specifically, indigenous peoples around the world carry a disproportionate burden of cancer, and this includes ngā tangata Māori here in Aotearoa.

Previous discourse around indigenous cancer statistics centred on individual level factors such as 'it is because they smoke more, eat worse and don't go to the doctor etc'. However, system level factors that contribute to overall

indigenous cancer statistics rarely get sustained attention. Cancer statistics are hugely contributed to by health system level factors such as implicit bias, differential treatment options, delayed treatment, and structural disadvantages.

In February 2018, Cancer Society Wellington supported an inaugural Indigenous People and Cancer Symposium for peoples of Aotearoa, Australia and the Pacific. This two-day symposium included renowned international and regional cancer experts with a shared agenda of finding system solutions to decrease the alarming statistics.

The symposium was attended by over 200 delegates from around the world and opened with a powerful and raw whānau reflections session which set the tone for the whole two days. One delegate responded to the whānau session describing it as "moving, raw and uncomfortable for us who work in those organisations – which is probably a good thing." The inclusion of patient and whānau realities allowed delegates to take a critical view of their own work and organisational structures in order to find system solutions within their sphere of influence.

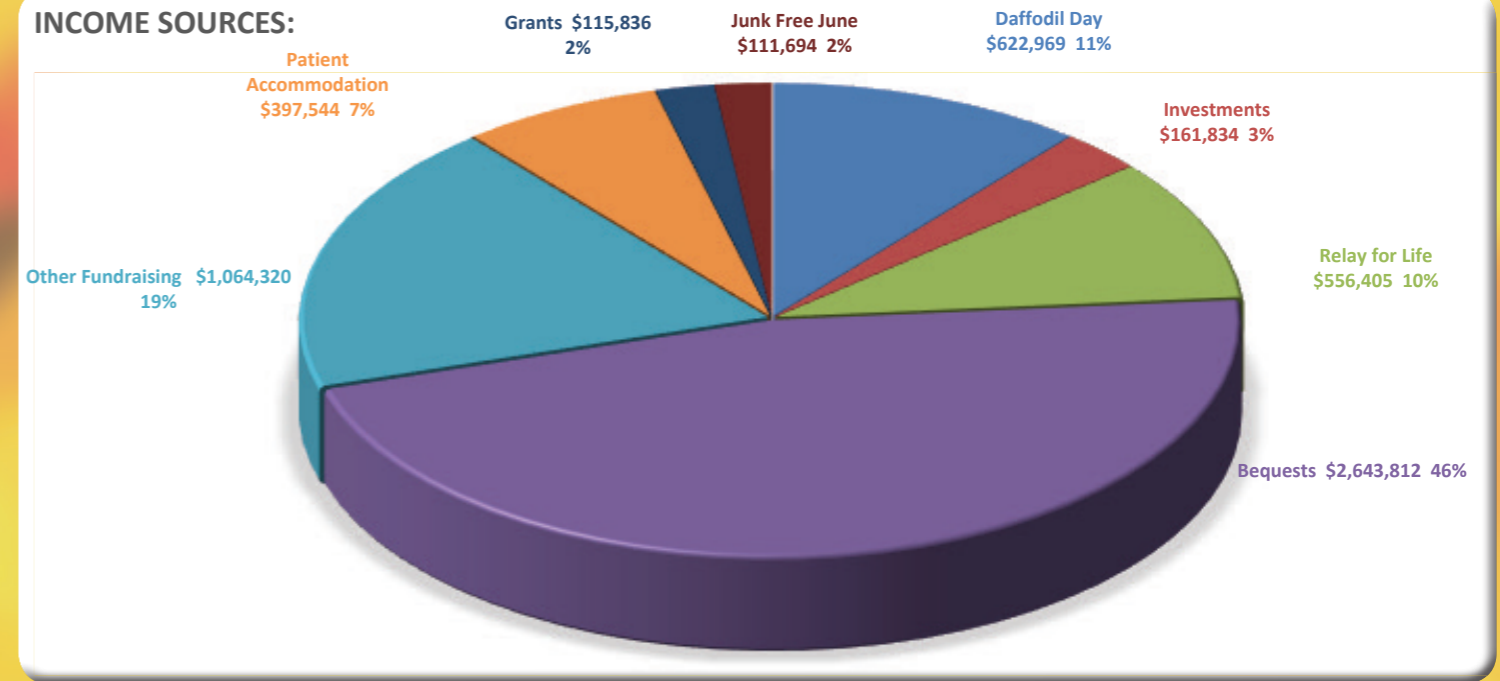
- Some other outcomes include:
- A letter published in *The Lancet Oncology* requesting the World Health Organisation (WHO) to improve their resourcing for indigenous cancer control strategies.
 - A reply from the Director General of the WHO has been received and published.
 - A call to action sent to local MPs.
 - Three non-government organisations have now increased funding and resources towards establishing equity.

Specific to our work, Cancer Society Wellington responded immediately to the challenges made at the symposium and allocated additional resourcing towards establishing equity.

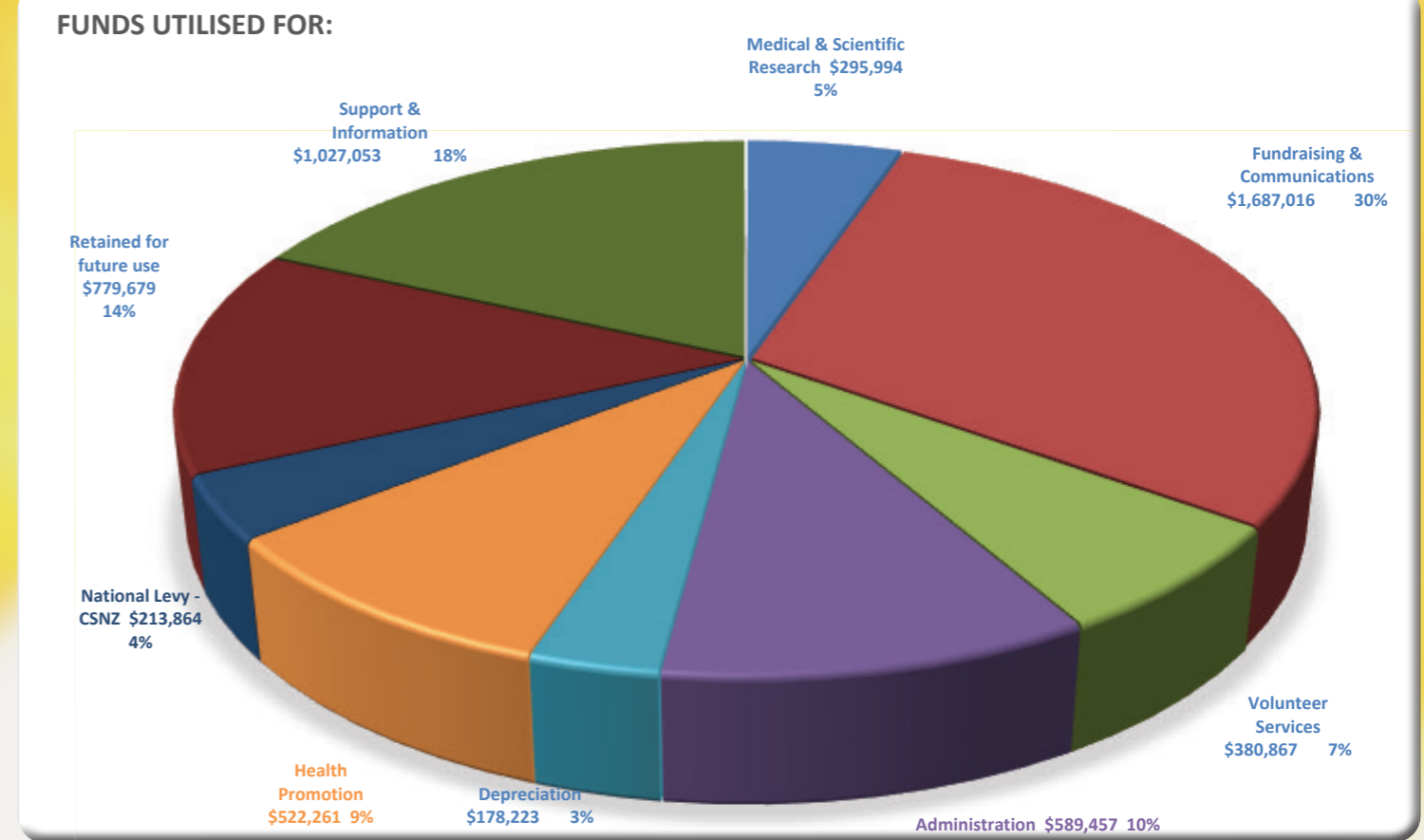
As a team and a Division we are looking forward to advancing our own response to these inequities and reaffirming our commitment to reducing the impact and incidence of cancer for all New Zealanders.

FINANCIAL SUMMARY

INCOME SOURCES:



FUNDS UTILISED FOR:



FINANCIAL SUMMARY FOR THE 12 MONTHS ENDING 31 MARCH 2018

The Cancer Society Wellington Division, including our Centres in Nelson, Marlborough and the Wairarapa raised \$5,674,414 in the 12 months to 31 March 2018.

The summary graphs have been extracted from the full financial statements of the Division, including the Nelson, Marlborough and Wairarapa Centres. All entities are registered charities under New Zealand's Charities Services (Department of Internal Affairs). Full financial statements for each entity (including audit reports) are available on request from the Cancer Society at 52 Riddiford Street, Newtown, Wellington.

THANK YOU TO OUR SPONSORS AND SUPPORTERS

WELLINGTON

33 Trust Ltd • Air New Zealand Retired Staff Club • ANZ Tory St 2018 • BNP Paribas Wellington • Chartered Accountants Australia and New Zealand • Cyril Lindsay Sanders Trust • Donna Ngan • Dry July Foundation NZ • Emily Brier • Festival of Music • First Sovereign Trust • Gold Coast Motocross Club • Graeme Eskrigge Trust • Henry and Eileen Wise • Medical Trust (via Nikau Foundation) • Hutt International Boys School • Hutt Mana Charitable Trust • Island Bay Ranger Guides • Ivan and Nancy Charitable Trust • Jack Jeffs Charitable Trust • Jana's Bananas • Joan Moya Campbell Charitable Trust • Johnsonville Club Inc. • John Walsh • Lindsay Gault • Mike Butler • Morris and Mary Evans Charitable Trust • New Zealand Community Trust (NZCT) • NZ Racing Board • Owen and John Whitfield Charitable Trust • Pelorus Trust • Peter Brown • Random People • Ray Watts Charitable Trust • Richard and Doreen Evans Charitable Trust (via Nikau Foundation) • Samuel Marsden Karori • Station 44 • St Oran's College • Summerset Group • Team Danz • Team Doin' It For • The Majestics • The Ritchies • The Walkie Talkies • Titahi Bay Bowling Club • WCC • Wellington City Council • Wellington Racing Club

KĀPITI

Beach FM • Burpees for Love • Kena Kena School • Kāpiti Health Advocacy Group • Paraparaumu College Girls' Leadership Team • Paraparaumu College • Porirua East School • Raumati Beach School • Te Ara Korowai • Waikanae Health Hub • Waikanae School • Whitireia Polytechnic •

WAIRARAPA

Bruce Levy • Catherine McKinley • Dry July Foundation • Eastwood Motor Group • Enumerate Chartered Accountants • Esther Bunning Photographer • Giddens Family • Jan McLaren • Jennifer Sartow Trust • Longford Trust • Mediaworks • Pain & Kershaw Mitre 10 Martinborough • Pete Nikoliasion • Property Brokers Real Estate Co. Wairarapa • Rob Walker Panelbeaters • Sue Nikoliasion Photographers • Wairarapa Property Consultants • Wairarapa Property Law • Wairarapa Times Age • Wong Family Trust •

MARLBOROUGH

ANZ • Bay Joinery • BB Signs • Blenheim Drycleaning • Blue Door • COGS • Cuddon Ltd • Dry July • Event Hire Limited • Fisher & Paykel • Forrest Graperide • Framers on Queens • Huguette Michel • Fleurie • Kevin Judd • Lotteries Grant Board • Mangos Restaurant • Marlborough District Council • Marlborough Guild of Woodworkers Inc. • Marlborough Inner Wheel • Marlborough Lines • Marlborough Primary Schools • Marlborough Roads • Mary Parker • McCarthy Law • McKendry Motors • Meaters of Marlborough • Ngāti Rārua • NZ Community Post • Pub Charity Ltd • St John NZ • Summit Real Estate •

NELSON

Activate Physio • Alastair Kerr • Also • Anchor Print • Anjela Sharma Bar rister & Solicitor • ANZ • Avoca Design • Benjamin Black Goldsmiths • Blast Entertainment • Cognita AV • Design Art • Dick Frizzell • Dilmah Tea • Dronemate • Event Audio • Ford's Restaurant & Bar • G J Gardner Homes • Gibbons Construction • GK Events Hire • Good Bitches Baking • Gourmet Catering • Greenacres Golf Club • Heritage Home owners • Hopgood's Restaurant • Lone Star Restaurant and Bar • Look Good Feel Better Volunteers • Mahana Estate Wines • Manchester Unity Friendly Society • Matt Dickson Electrical • Media Works • Motueka Inner Wheel • Mount Campbell Communications • Nayland Senior Basketball Team • Nelmac • Nelson College • Nelson City Council • Nelson City Taxis • Nelson Community Venues • Nelson Golf Club • Neudorf Vineyards • New Zealand Cadet Forces • New Zealand King Salmon • NZME • Pic's Peanut Butter • Rapid Relief Team • Richmond Rotary Charitable Trust • Rockgas • Seifried Estate Winery • St Johns NZ • Staig and Smith • Stoke Tahunanui Inner Wheel • Waimea Nelson Inner Wheel • Sturrock & Greenwood • Summerset Knit and Natter Group • Tasman Watercare Distributors • The Breeze • TNL Ltd • Trade Central NZ



ON AVERAGE THERE ARE **6 SHOPS** THAT SELL CIGARETTES WITHIN TEN MINUTES WALK OF A SECONDARY SCHOOL

Source: Marsh, L., Docher, C., & Robertson, L. A. (2013). Characteristics of tobacco retailers in New Zealand. *Tobacco Use & Dependence*, 18(1), 1-7.

WORLD SMOKEFREE DAY HELP US MAKE CIGARETTES LESS AVAILABLE

Last year over **4,700** patients were driven nationally to and from their treatment, covering over a million kilometres



Nationally each year we provide over **\$5 million** in funding for cancer research in New Zealand

1,129,887 km covered nationally by volunteer drivers

145,820 clients supported by the Cancer Society NZ Divisions (including CSW) annually

3,564 bed night stays at Margaret Stewart House, a home away from home provided by Cancer Society Wellington (CSW) for people travelling from out of town for cancer treatment

CSW Volunteer drivers transported patients to over **3,300** Cancer related appointments

CSW 0800 CANCER Helpline received **3,000** calls

600 people attended programmes run by CSW

Over **500** CSW counselling sessions

60 supportive care staff provided care and support across New Zealand

CSW provided over **50** people with financial support

48 different sporting groups and events used Shade Loan equipment in the Wairarapa

CSW provided **17** community grants

12 government organisations and businesses received support running their wellness programmes

We arranged **6** training sessions delivered to health providers so that they could better support clients

HEALTH PROMOTION:

NATIONAL ADVOCACY ON TOBACCO CONTROL

- Minimum price / tax increases
- Plain packaging
- Tobacco advertising restrictions
- Supporting Smokefree Environments
- Advocacy for legislation to control cigarette pack sizing and flavours and additives
- Personal Vapourisers (E Cigarettes) – advocacy for regulation on sale, marketing and safety



Cancer Society Division	2006 Census			2013 Census		
	Regular Smoker	Ex-Smoker	Never Smoked Regularly	Regular Smoker	Ex-Smoker	Never Smoked Regularly
Auckland/Northland	198345	204285	626652	152172	226161	746322
Waikato/Bay of Plenty	103209	103758	237213	81648	116565	272364
Central Districts	89139	85266	193710	69105	95148	212304
Wellington	82161	98706	240069	61737	108405	274665
Canterbury/West Coast	79800	94944	236826	63822	100827	261957
Otago & Southland	45084	50238	119310	34668	54822	132879
New Zealand	597792	637293	1653924	463194	702015	1900617

Source: Statistics New Zealand (2006 and 2013 Census)
Note: does not add up to total population as "not specified" have been omitted.

CANCER IS NOW THE LEADING CAUSE OF DEATH IN NEW ZEALAND

THERE ARE OVER **23000** PEOPLE DIAGNOSED YEARLY

THERE HAS BEEN ALMOST A 30 PERCENT INCREASE OVER THE PAST 10 YEARS

9500 NEW ZEALANDERS DIE FROM CANCER EACH YEAR

CANCER ACCOUNTS FOR **31%** DEATHS RECORDED IN NEW ZEALAND

BY THE YEAR **2035** THERE WILL BE A FURTHER INCREASE OF **50%**

TAUPO
LEVIN
WHAKATANE

The Cancer Society provides accommodation close to all major hospitals in New Zealand. In 2017 nationally it provided **49,042** overnight stays.

Over **10,000** referrals nationally



